

Year 2 Spring - London and Cairo

What are the key similarities and differences?

Vocabulary

atlas – book of maps and charts

globe - the world

London – capital of England.

River Thames – a river in London

Cairo – capital of Egypt

River Nile – River in Cairo.



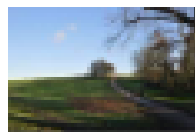
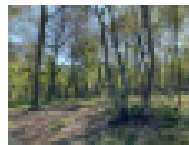
Physical features of London

Located on the River Thames

hills and woodland.

Weather: Four Seasons

Climate: Temperate (cold winters and mild/hot summers, plenty of rain)



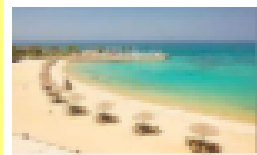
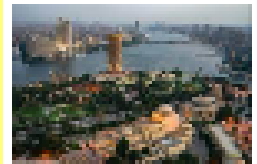
Physical features of Cairo

Located on the River Nile.

Sahara desert, mountains Nile Delta and beaches.

Weather: Two Seasons

Climate: Arid (dry-no rain, very hot, humid summers, cool, mild winters)



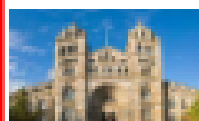
Humans features of London

London is the **capital** of England in Europe

London is 3 times the size of Cairo.

Population: over 9 million

It has many building, roads, bridges and historical landmarks like the Tower of London and Buckingham Palace.



Humans features of Cairo

Cairo is the **capital** of Egypt in Africa

Population: over 9 million

It has lots of buildings, roads and people living very close together – **dense population.**

It is very close to the historical landmark: the Pyramids of Giza.

