

# Notley Green Primary School

Blickling Road, Great Notley, Braintree, Essex CM77 7ZJ

Tel: 01376 343485

Email: [ngcontact@compassps.uk](mailto:ngcontact@compassps.uk)

Website: [www.notleygreen.compassps.uk](http://www.notleygreen.compassps.uk)

**Head Teacher:** Emma Saward

**Deputy Head:** Jenni Colebrook



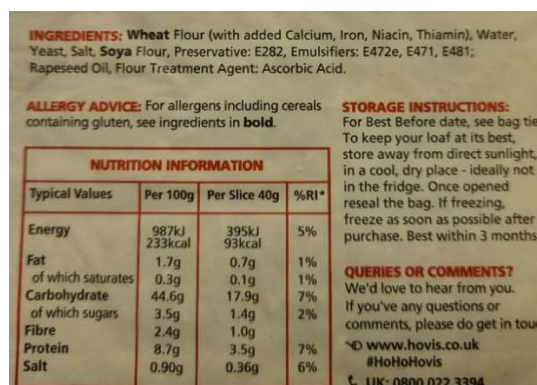
November 2023

Dear Parents/Carers

We are writing to make you aware of an update to the list of food related allergens to avoid being brought into school. This includes any snacks, lunch boxes, food donations etc.

Due to severe allergies within our school, we are asking that no products containing **SESAME** are brought into school. This could include foods like seeded breads, bread sticks with sesame as an ingredient, seeded crackers, hummus, products containing tahini as an ingredient and any foods where **SESAME** is highlighted as an ingredient. This is in addition to **NUTS** and **PEANUTS** which we currently ask parents to avoid sending into school.

Sesame, nuts, and peanuts are recognised allergens outlined by food labelling regulations in the UK. These ingredients must be displayed in a clear/bold manner on all products for sale in the UK, which will make them easy to avoid as an ingredient. Please see below a list of the 14 major allergens highlighted in the UK and an example below of a label with wheat and soya clearly identified as allergens – Sesame, nuts and peanuts will be highlighted in the same way.



The list of food we ask not to be brought into school are:

- **NUTS** – this includes all trees nut, for example, hazelnuts, walnuts, pecans, macadamia etc
- **PEANUTS**
- **SESAME**

If you have any questions or concerns please do not hesitate to contact the school office on [ngcontact@compassps.uk](mailto:ngcontact@compassps.uk) or our catering team on [cpeast-catering@compassps.uk](mailto:cpeast-catering@compassps.uk)

We thank you for your continued support at keeping our pupils safe.

Kind Regards

Emma Saward